



## DEVELOPING GOLD-SILVER PROJECTS IN MEXICO



**TOCVAN VENTURES**  
CORP.



August 2022  
CSE: TOC | OTCQB: TCVNF | FSE: TV3



# FORWARD LOOKING STATEMENTS

Statements in this corporate presentation contain forward looking information including expectations of future production and commodity prices, drilling and exploration plans, timing and amounts of capital expenditures and future expenditure levels. Readers are cautioned that assumptions used in the preparation of such information may prove to be incorrect. Events or circumstances may cause actual results to differ materially from those predicted, as a result of numerous known and unknown risks, uncertainties, and other factors, many of which are beyond the control of the TOCVAN Ventures Corp. (or the "Corporation" or "Company"). These risks include, but are not limited to: the risks associated with the mining industry, future exploration results, economic conditions in the countries and regions in which the Corporation conducts business, ability of the Corporation to implement its business strategy, ability of the Corporation to market its products, government regulations and the expenditures required to comply with them, commodity prices, interest and exchange rate changes, the outcome of current legal proceedings, and the availability of financing. Industry related risks include, but are not limited to: operational risks in exploration, development and production, delays or changes in plans, health and safety risks and the uncertainty of estimates and projections of costs and expenses. The reader is cautioned not to place undue reliance on any forward looking information. The Corporation undertakes no obligation to update or revise any forward looking statements except as required by applicable securities laws.

The information contained in this corporate presentation does not purport to be all inclusive or to contain all information that a prospective investor may require. Prospective investors are encouraged to conduct their own analyses and reviews of the Corporation and of the information contained in this corporate presentation. Without limitation, prospective investors should consider the advice of their financial, legal, accounting, tax and other advisors and such other factors that they consider appropriate in investigating and analyzing the Corporation.

Brodie A. Sutherland, P.Geo., CEO for Tocvan Ventures Corp. and a qualified person ("QP") as defined by Canadian National Instrument 43-101, has reviewed and approved the technical information contained in this presentation.

# WHY TOC?

## Gold-Silver Focused

100% interest in two oxide gold projects in a low-cost jurisdiction

## 36.3 MM Shares Issued

Options: 1.51 MM, avg. \$0.38 CAD

Warrants: 2.61 MM, avg. \$0.96 CAD \*as of May 31, 2022

## Proven Technical Team with Local Expertise

### Brodie A. Sutherland – President & CEO

P.Geo with over 15 years of industry experience exploring and developing key assets in over 20 countries. Essential member of discovery teams.

### Rodrigo Calles Montijo – Chief Geologist

Local expert and technical team lead. Over 30 years of global mineral exploration experience, working with groups that include Rio Tinto, Kennecott and SRK Consulting.

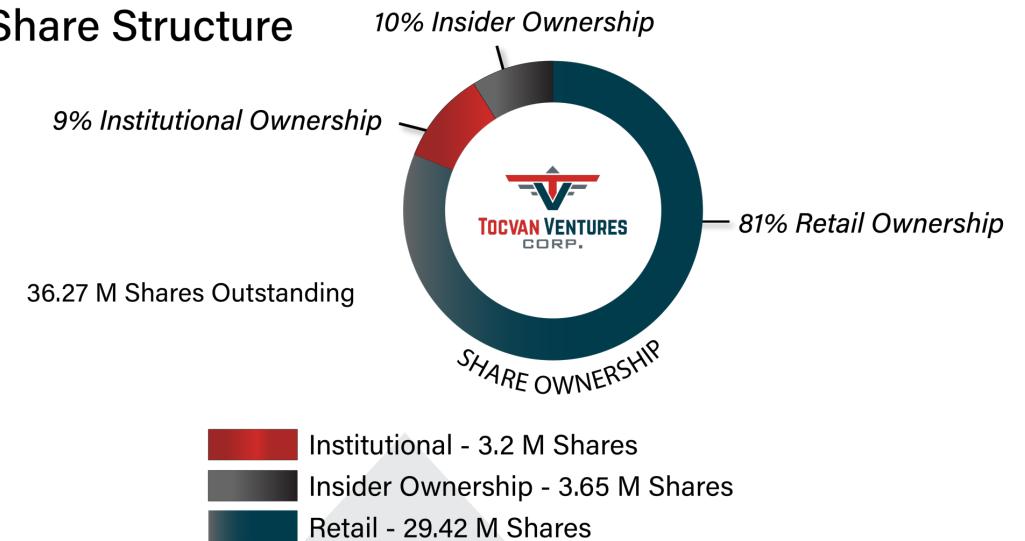
### Issac Ortega – Project Manager

Geologist with 20 years of experience in exploration of base, precious and non-metallic deposits. Wide experience regional and detailed geological mapping, geochemical sampling and supervision and control of drill programs.

### Dr. Raul Lugo – Technical Advisor

Ph.D. degree in structural geology, with 20 years of experience in the mining sector and in research. Professor of structural Geology at the University of Sonora.

### Share Structure



# WHY MEXICO?



## Ranked 1<sup>st</sup> in Latin America Exploration Investment<sup>1</sup>

\$600 MM USD Annually. Mexico accounts for 23% of investment in Latin America exploration.



## Top 10 Global Gold Producer<sup>2</sup>

102 tonnes annually



## 1<sup>st</sup> in Global Silver Production<sup>3</sup>

6,120 tonnes annually

1 – Chilean Copper Commission 2 – Gold.org 3 – SilverInstitute.org

## SONORA STATE

Top Gold Producer in Mexico: 37%

Host to Multi-Million Ounce Deposits:

- La Herradura >10Moz
- San Francisco >3Moz

## Home to Producers:

- FRESNILLO
- AGNICO EAGLE
- OSISKO DEVELOPMENT
- MINERA ALAMOS
- ARGONAUT
- MAGNAGOLD



# SONORA

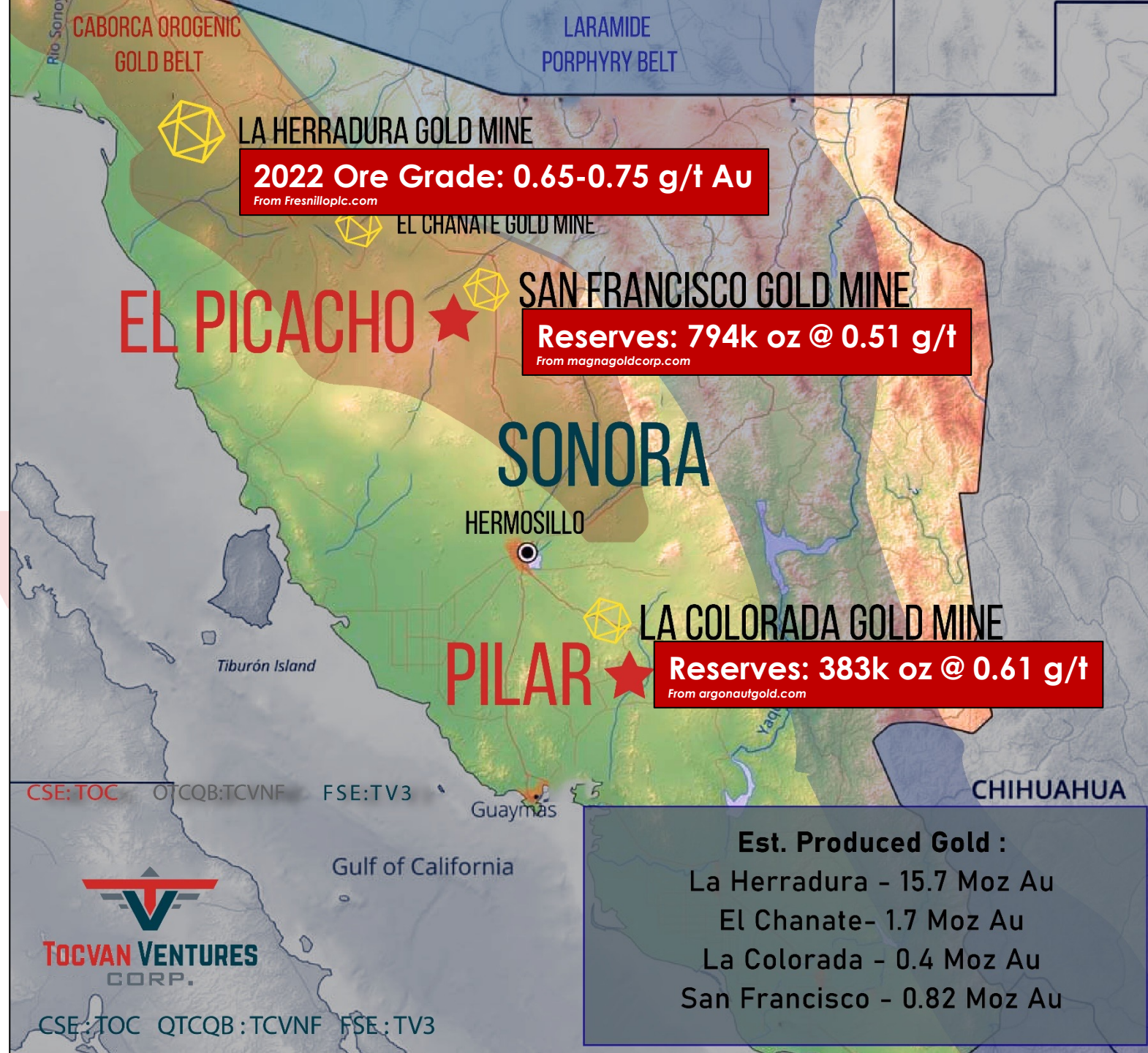
## Capital City: Hermosillo

- International Airport
- 4hr drive south of Tucson
- Certified Prep Lab (ALS)
- Exploration/ Mining Contractors & Consultants

## Tocvan Projects

- 2.5hr drive from Hermosillo
- Fully Road Accessible
- Local Resources
- Proximal to Producing Mines

CSE: TOC | OTCQB: TCVNF | FSE: TV3





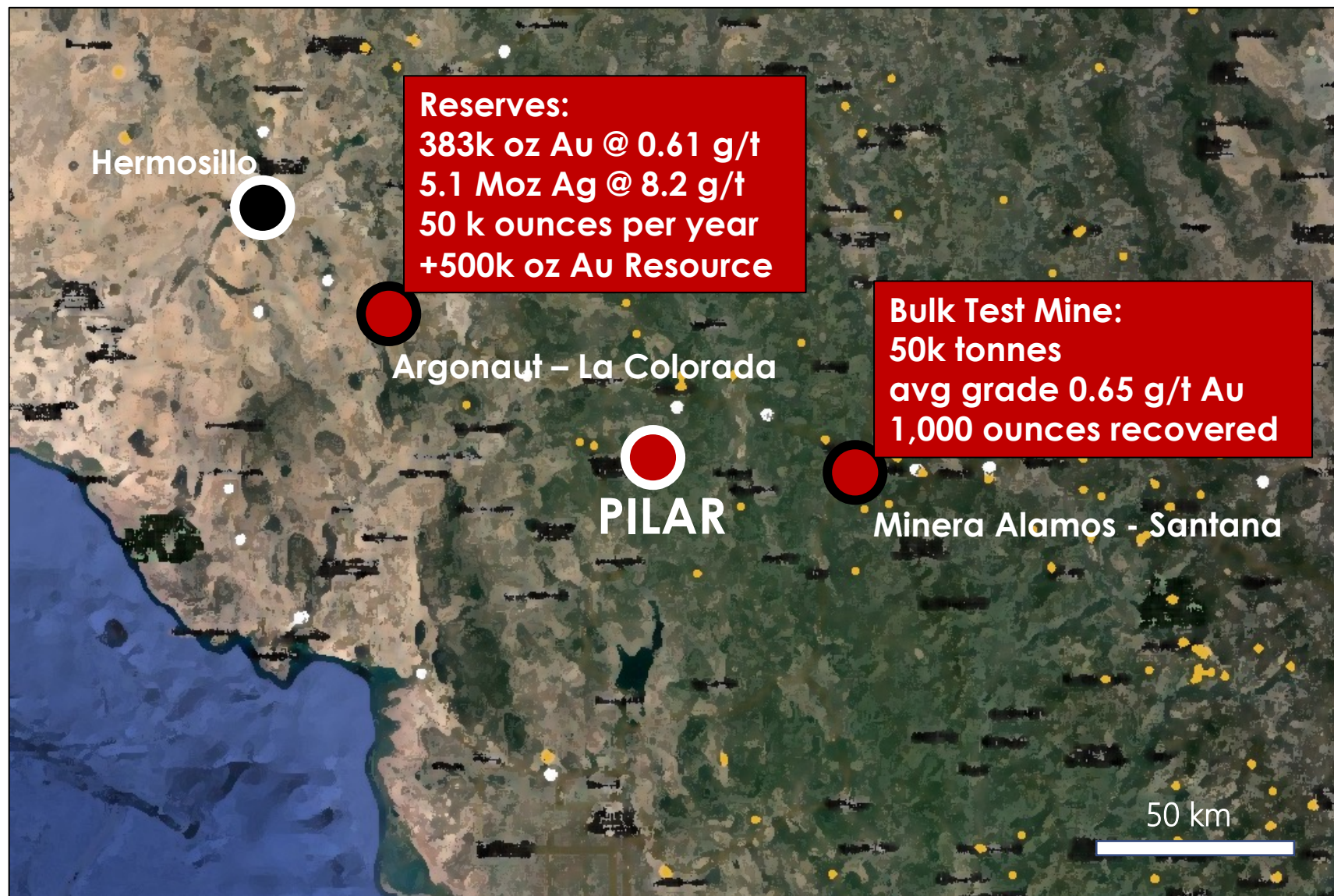


## PILAR Au-Ag PROJECT

- >20,000m drilled to date
- Oxide Au-Ag
- 116.9m @ 1.2 g/t Au
  - incl. 10.2 m @ 12 g/t Au and 23 g/t Ag
- >90% Au Recovery; up to 84% Ag Recovery
- Road Accessible



# PILAR: Targeting Near-Term Production



## Local Comparable

**Santana (Au)**  
50 km to the east  
0.65 g/t Au (Bulk sample avg.)  
Au Recovery 70%

From mineraalamos.com/news

**La Colorada (Au-Ag)**  
80 km to the northwest  
0.61 g/t Au, 8.2 g/t Ag  
Au Recovery 53 to 89%  
Ag Recovery 11 to 53%

From argonautgold.com



# Phase I & II – Drilling

## Phase I - Highlights

**JES20-36: 24.4m @ 2.5 g/t Au and 73 g/t Ag  
incl. 1.5 m @ 33.4 g/t Au and 1,090 g/t Ag**

**JES20-32: 94.6m @ 1.6 g/t Au  
incl. 9.2 m @ 10.8 g/t Au and 38 g/t Ag**

**JES20-33: 41.2m @ 1.1 g/t Au  
incl. 3.1 m @ 6.0 g/t Au and 12 g/t Ag**

## Phase II - Highlights

**JES21-38: 29m @ 0.71 g/t Au  
incl. 6m @ 1.9 g/t Au**

**JES21-43: 35.1m @ 0.66 g/t  
incl. 13.7 m @ 1.7 g/t Au**

**JES21-47: 47.7m @ 0.70 g/t Au  
incl. 3 m @ 5.6 g/t Au and 22 g/t Ag**

**JES21-50: 39.7m @ 0.96 g/t  
incl. 1.5 m @ 14.6 g/t Au**

**JES21-53: 15.3m @ 1.1 g/t Au  
incl. 1.5 m @ 4.6 g/t Au**

## DRILL HIGHLIGHTS

**① JES-20-36**  
24.4m @ 2.5 g/t Au and 73 g/t Ag  
incl. 1.5 m @ 33.4 g/t Au and 1,090 g/t Ag

**② JES-20-32**  
94.6m @ 1.6 g/t Au  
incl. 9.2m @ 10.8 g/t Au and 38 g/t Ag

**③ JES-21-53**  
15.3m @ 1.1 g/t Au

**④ JES-21-50**  
39.7m @ 0.96 g/t Au

## TRENCH HIGHLIGHTS

**T-21-2**  
19.5m @ 0.61 g/t Au  
incl. 2.7m @ 3.0 g/t Au and 20 g/t Ag

**T-21-3**  
19.8m @ 0.73 g/t Au  
incl. 8.6m @ 1.3 g/t Au and 12 g/t Ag



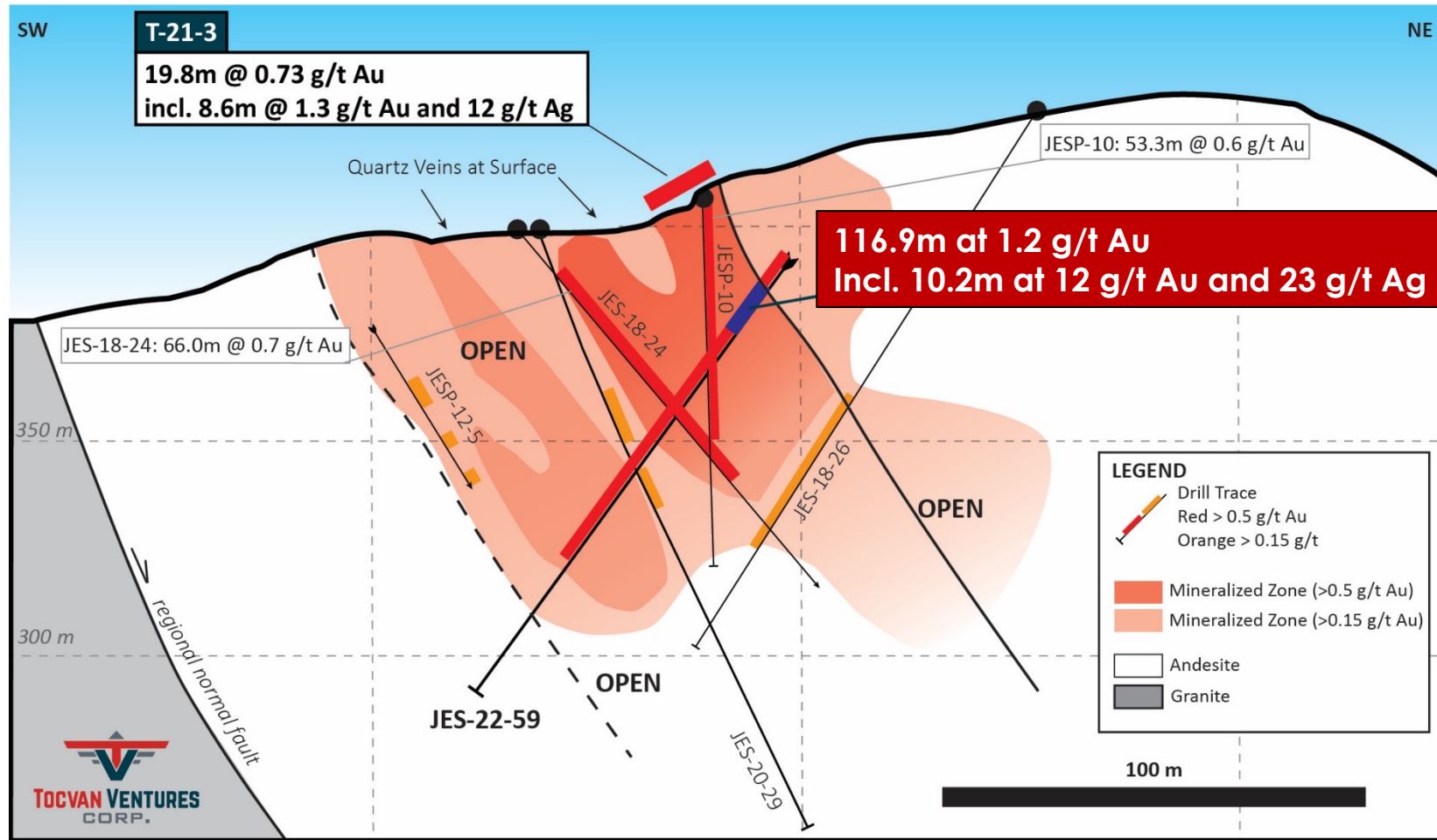
PILAR



0 100 200 m



# Oxide Gold – Amenable to Low Cost Heap Leach



## Preliminary Metallurgical Work

### Bottle Roll – 48hr Retention Time

low-grade composite

0.63 g/t Au - 91% Recovery

7 g/t Ag - 70% Recovery

mid-grade composite

1.2 g/t Au - 92% Recovery

12 g/t Ag - 84% Recovery

### Table of JES20-32 (RC) results

From (m)	To (m)	Interval (m)	Au (g/t)	Ag (g/t)
57.95	59.48	1.53	3.64	14
59.475	61	1.53	16.50	29
61	62.53	1.53	10.25	70
62.525	64.05	1.53	25.00	62
64.05	65.58	1.53	7.04	42
65.575	67.1	1.52	2.18	10
67.1	68.63	1.53	0.81	7
68.625	70.15	1.53	1.11	5
70.15	71.68	1.53	0.31	7
71.675	73.2	1.53	1.21	13
73.2	74.73	1.53	0.91	11
74.725	76.25	1.53	0.65	6
76.25	77.78	1.53	0.56	11
77.775	79.3	1.52	0.85	6



# Phase I & II – Drilling

## Phase I - Highlights

**JES20-36: 24.4m @ 2.5 g/t Au and 73 g/t Ag  
incl. 1.5 m @ 33.4 g/t Au and 1,090 g/t Ag**

**JES20-32: 94.6m @ 1.6 g/t Au  
incl. 9.2 m @ 10.8 g/t Au and 38 g/t Ag**

**JES20-33: 41.2m @ 1.1 g/t Au  
incl. 3.1 m @ 6.0 g/t Au and 12 g/t Ag**

## Phase II - Highlights

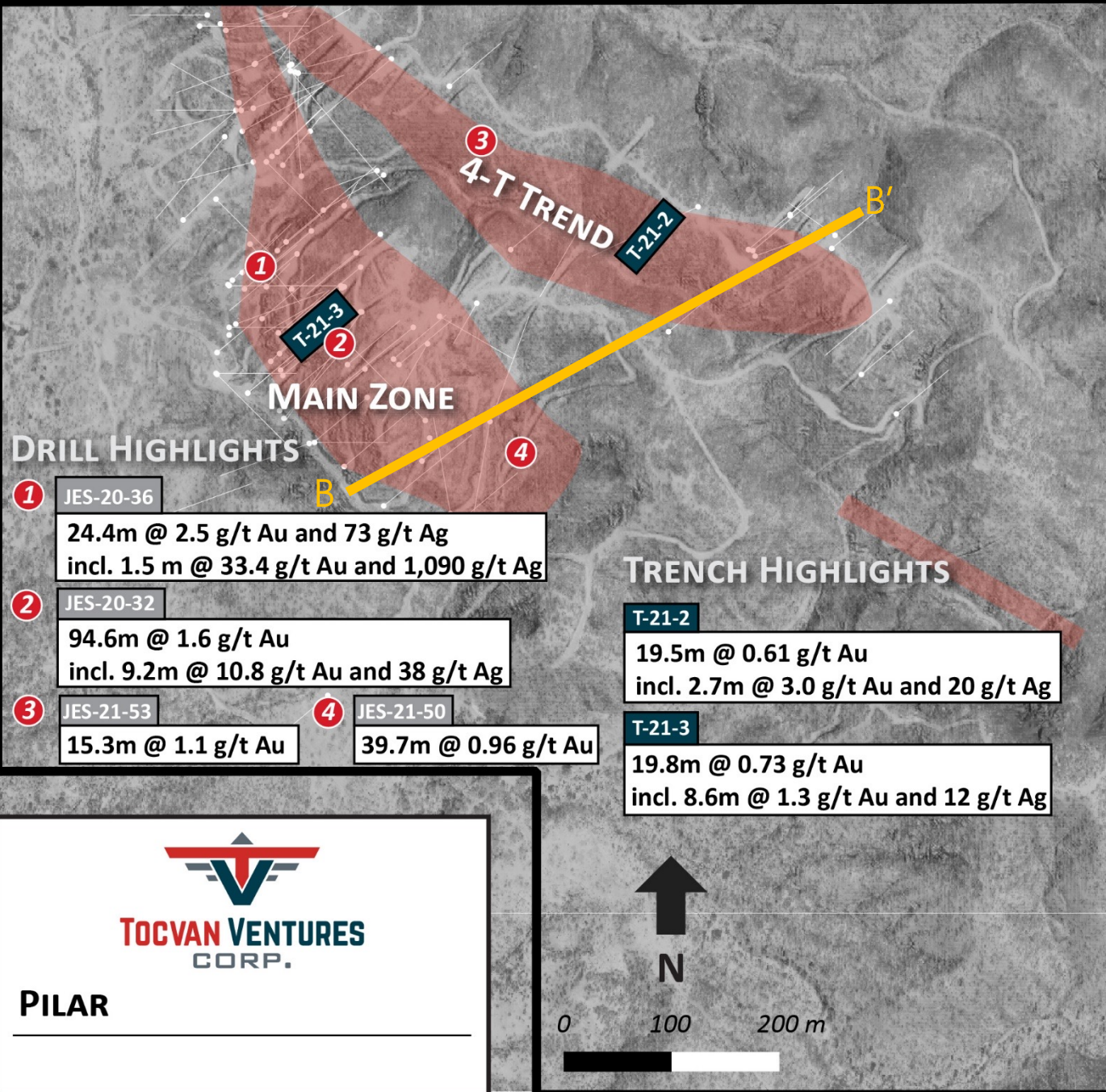
**JES21-38: 29m @ 0.71 g/t Au  
incl. 6m @ 1.9 g/t Au**

**JES21-43: 35.1m @ 0.66 g/t  
incl. 13.7 m @ 1.7 g/t Au**

**JES21-47: 47.7m @ 0.70 g/t Au  
incl. 3 m @ 5.6 g/t Au and 22 g/t Ag**

**JES21-50: 39.7m @ 0.96 g/t  
incl. 1.5 m @ 14.6 g/t Au**

**JES21-53: 15.3m @ 1.1 g/t Au  
incl. 1.5 m @ 4.6 g/t Au**





# NEW Breccia Discovery – 125m SE of Main Zone

## NEW Discovery Trend – 200M NE of Main Zone

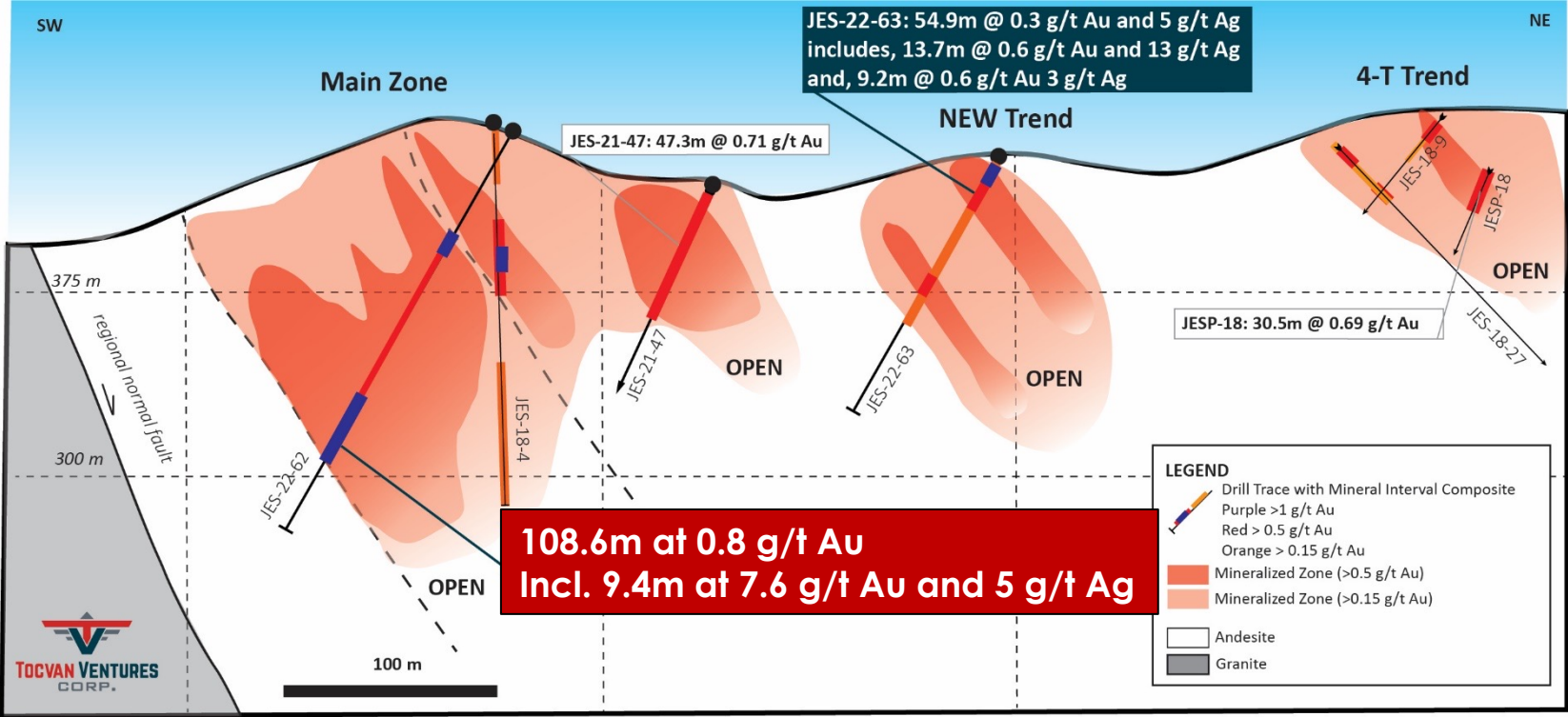


Photo of Breccia Zone

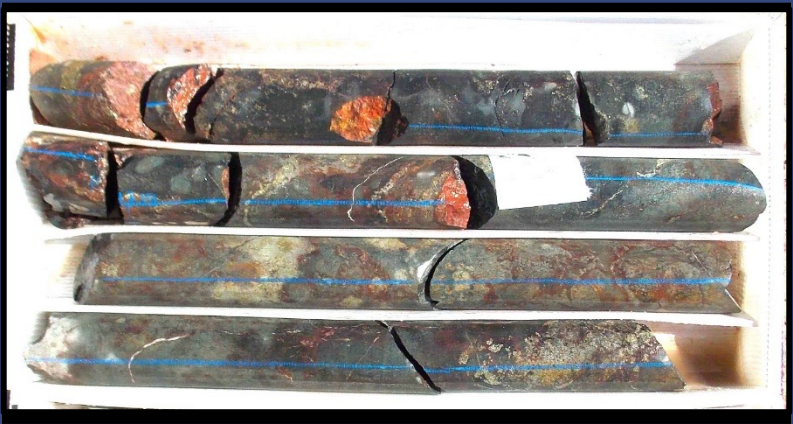


Table of High-Grade Breccia Zone

From (m)	To (m)	Interval (m)	Au (g/t)	Ag (g/t)
143.50	144.80	1.30	0.32	0.70
144.80	145.50	0.70	8.26	4.90
145.50	147.50	2.00	13.10	2.60
147.50	149.50	2.00	3.22	1.40
149.50	150.50	1.00	9.07	3.00
150.50	152.40	1.90	6.14	14.90
152.40	154.22	1.82	7.01	3.80
154.22	155.30	1.08	0.28	0.25

# Phase III Drilling

## Core Drilling Confirms/ Expands

### 2022 Phase III - Highlights

#### Main Zone:

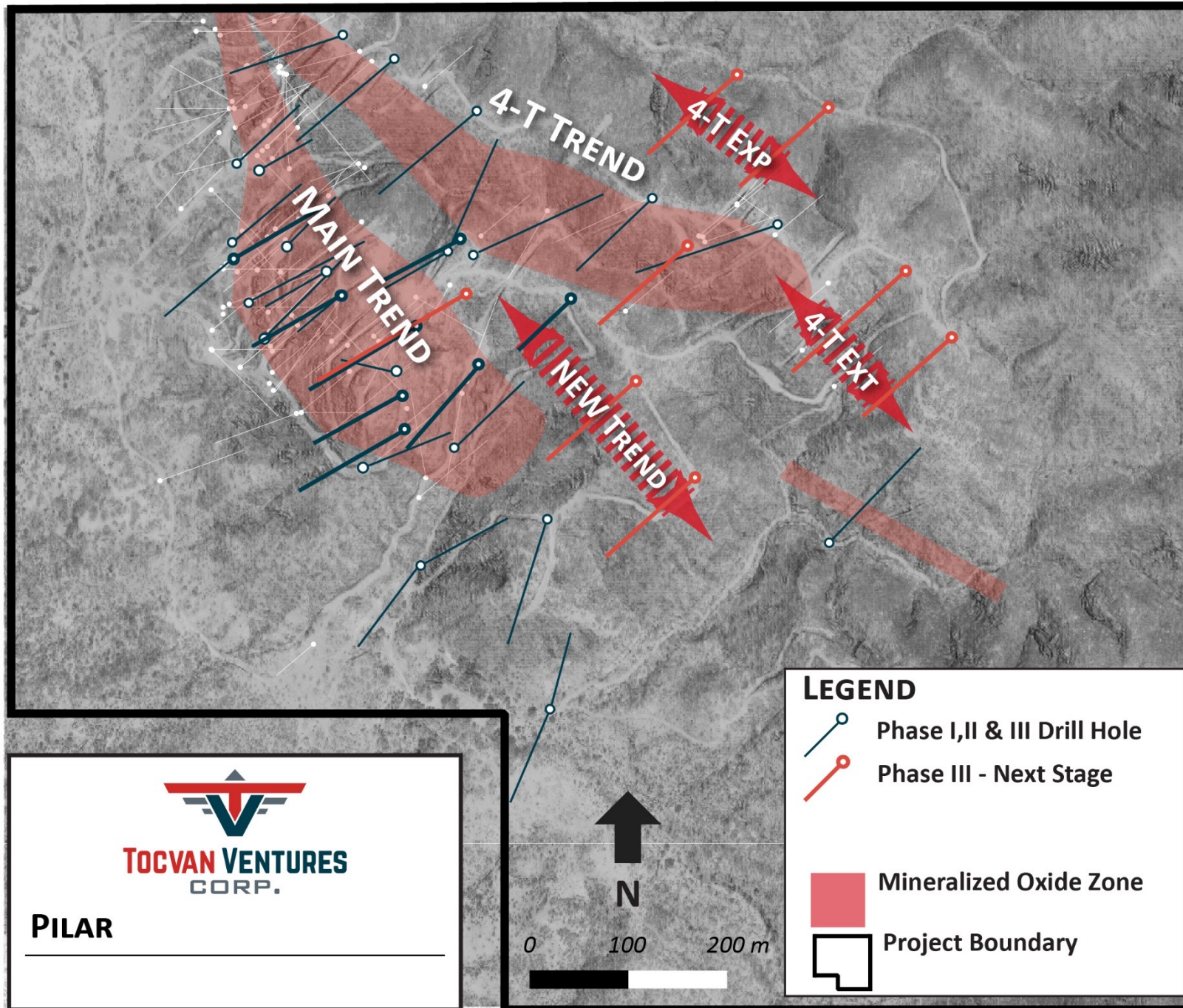
- 116.9m at 1.2 g/t Au
  - Incl., 10.2m at 12g/t Au
- 21.7m at 0.94 g/t Au

#### NEW Discovery

- 108.6m at 0.8 g/t Au
  - Incl., 9.4m at 7.6 g/t Au
- 63.4m at 0.6 g/t Au and 11 g/t Ag

#### NEW Trend:

- 54.9m at 0.3 g/t Au and 5 g/t Ag





# 2022 Surface Results

## Au-Ag over a 1.2 km trend

### 2022 Surface - Highlights

#### Main Zone (100m extension):

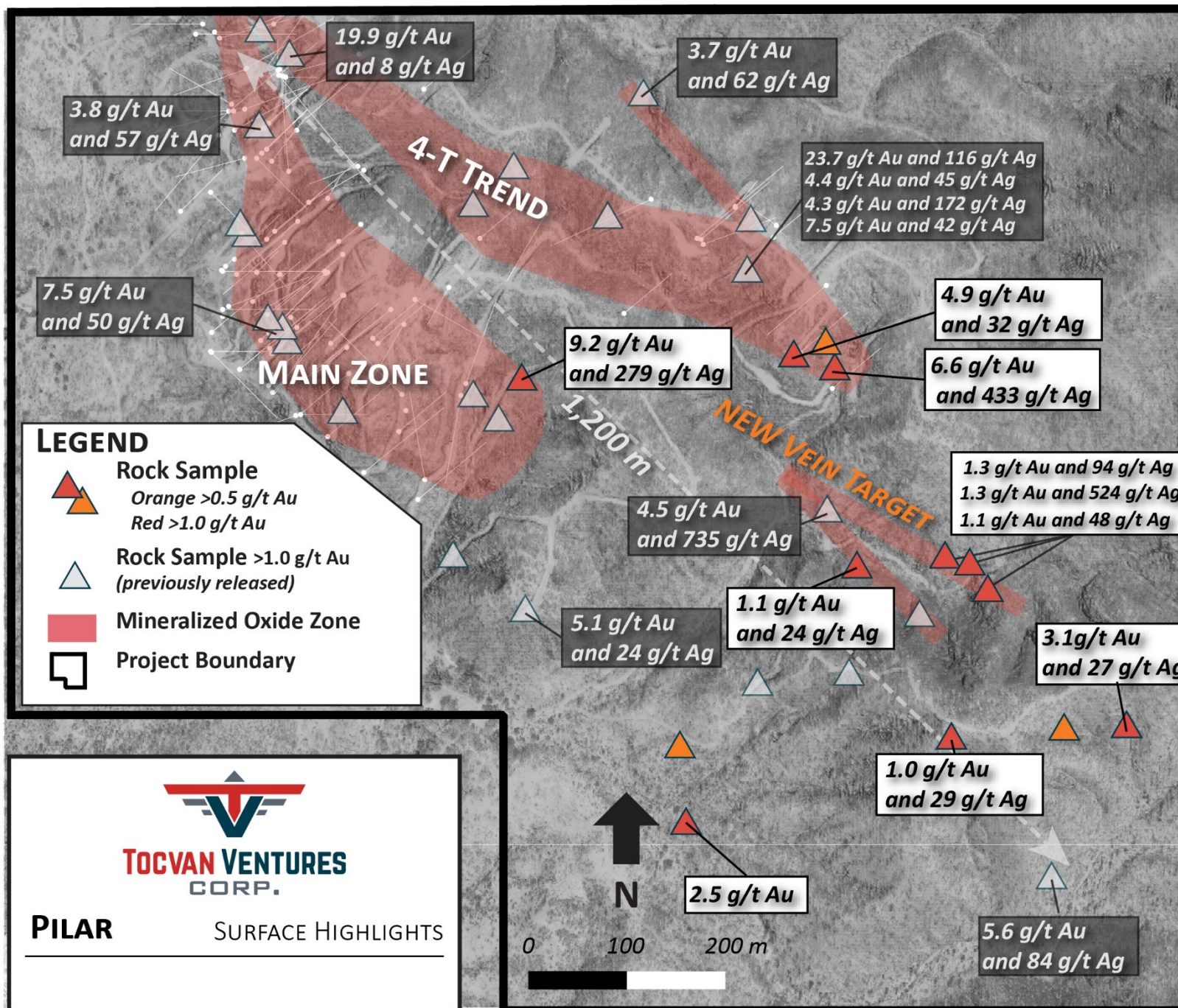
- 9.2 g/t Au and 279 g/t Ag

#### 4-T (100m extension):

- 6.6 g/t Au and 433 g/t Ag
- 4.9 g/t Au and 32 g/t Ag

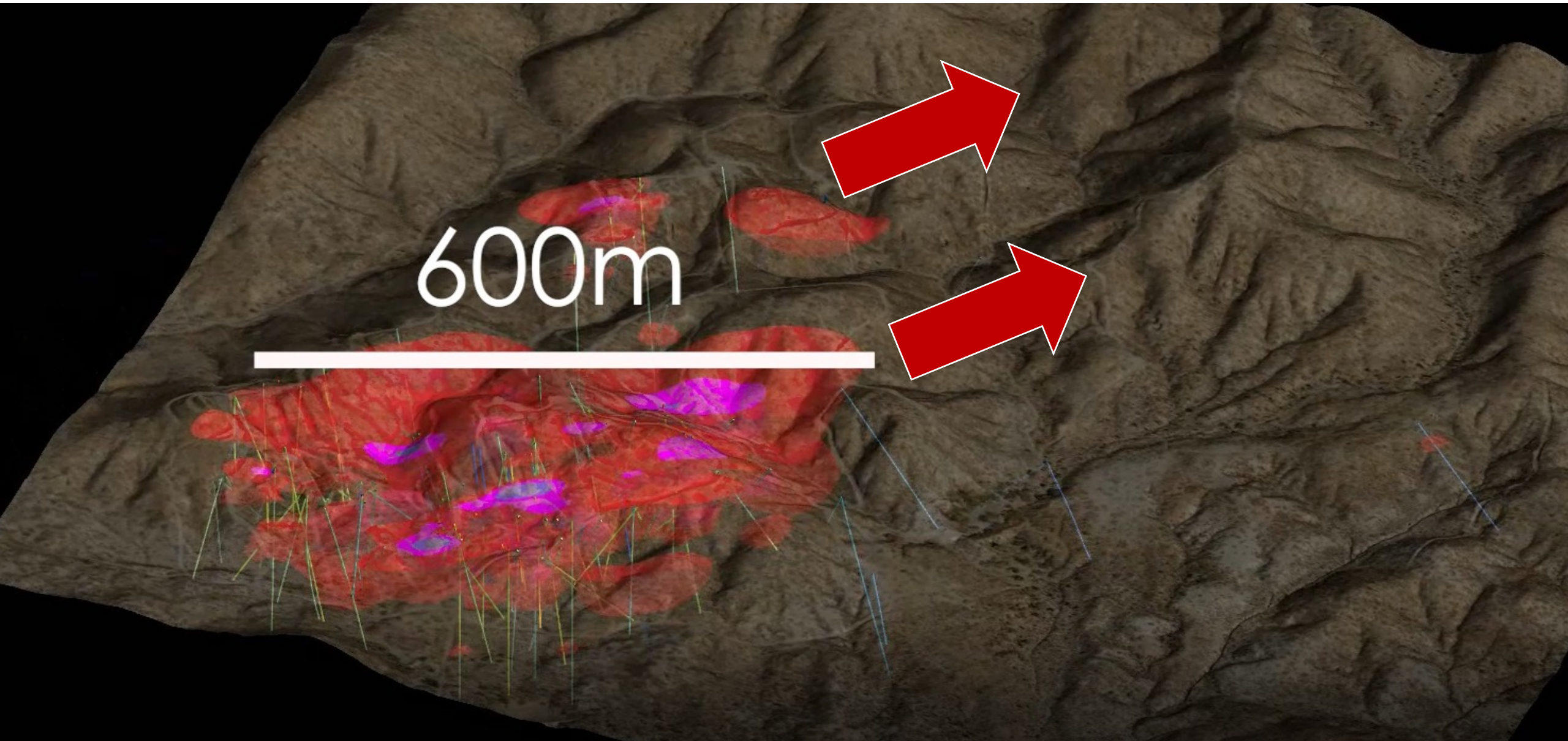
#### NEW Vein Target (250m strike):

- 1.3 g/t Au and 524 g/t Ag
- 1.3 g/t Au and 94 g/t Ag
- 1.1 g/t Au and 48 g/t Ag
- 1.1 g/t Au and 24 g/t Ag





# Potential to Expand to Southeast







## **EI PICACHO Au-Ag PROJECT**

- 24 km<sup>2</sup> of brownfields exploration
  - 18 km SW of San Francisco Mine
- 6 km of prospective trends
  - High-grade Au-Ag
  - Historic workings
- Fully permitted for drilling and trenching
- Road accessible, 140 km NW of Hermosillo



# EL PICACHO



## El Picacho - Five Advanced Target Areas

Rock Highlights  
4.4 g/t Au, 46 g/t Ag  
3.4 g/t Au, 6 g/t Ag  
2.5 g/t Au

Chicharra Pit Outline

San Francisco Pit Outline

18 km to San Francisco  
Mine (>3 Moz)

Rock Highlights  
8.0 g/t Au, 10 g/t Ag  
6.5 g/t Au, 176 g/t Ag  
7.7 g/t Au, 2 g/t Ag  
4.1 g/t Au, 5 g/t Ag  
3.6 g/t Au, 2 g/t Ag

Rock Highlights  
26 g/t Au, 340 g/t Ag  
15 g/t Au, 29 g/t Ag  
15 g/t Au, 66 g/t Ag  
17 g/t Au, 15 g/t Ag

Rock Highlights  
32 g/t Au  
28 g/t Au, 10 g/t Ag  
16 g/t Au, 6 g/t Ag  
14 g/t Au, 13 g/t Ag

Rock Highlights  
22 g/t Au, 22 g/t Ag  
15 g/t Au, 18 g/t Ag  
18 g/t Au, 12 g/t Ag  
16 g/t Au, 26 g/t Ag  
13 g/t Au, 21 g/t Ag  
12 g/t Au, 15 g/t Ag  
14 g/t Au, 83 g/t Ag  
13 g/t Au, 20 g/t Ag



## Project - Highlights

### Multi-million ounce potential

- 24 km<sup>2</sup> area to explore
- 6 km of prospective trend defined so far

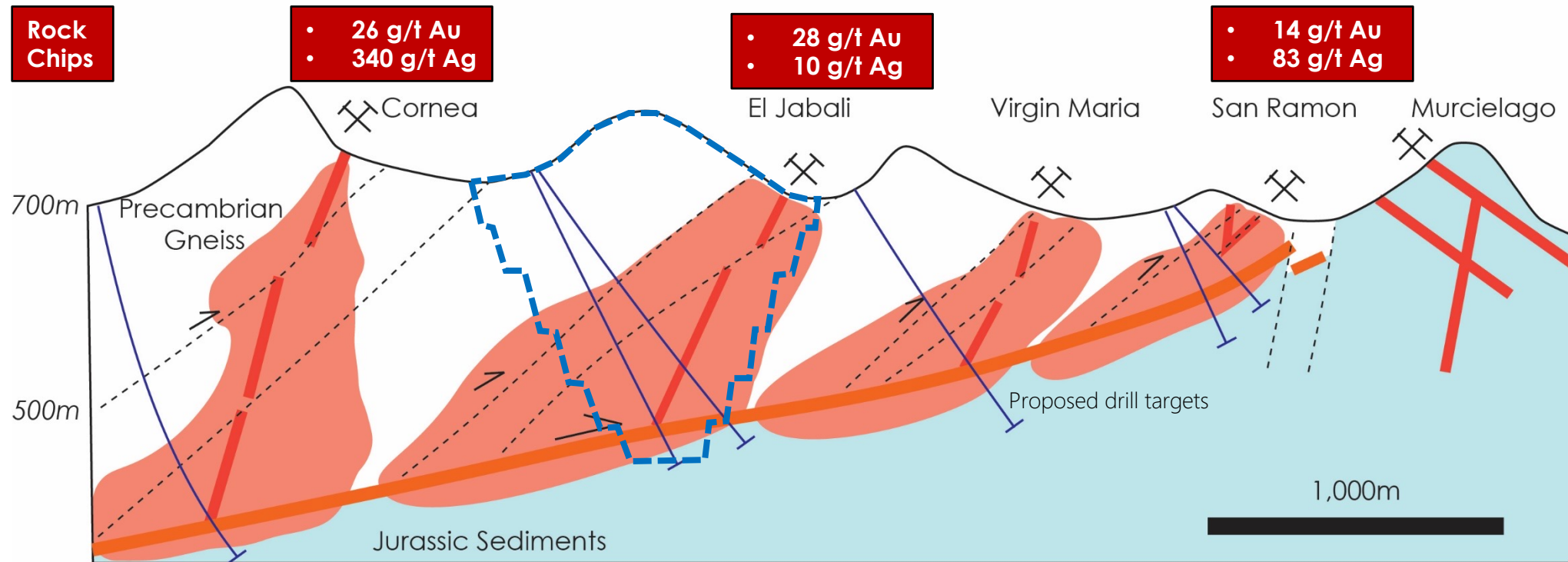
### Infrastructure

- 18 km from San Francisco Mine (3 Moz Au)
- Road accessible from Hermosillo (2.5 hrs)
- National Railine 3 km to east
- Fully permitted:
  - 2 km trenching
  - 15 km drilling



# EL PICACHO EXPLORATION MODEL

## LOOKING NORTH



### Project - Highlights

**+5 Targets - Untested**

**• Regional Thrust Fault Target**

**• 6 km of prospective trend**

# SAN RAMON PROSPECT

## Project - Highlights

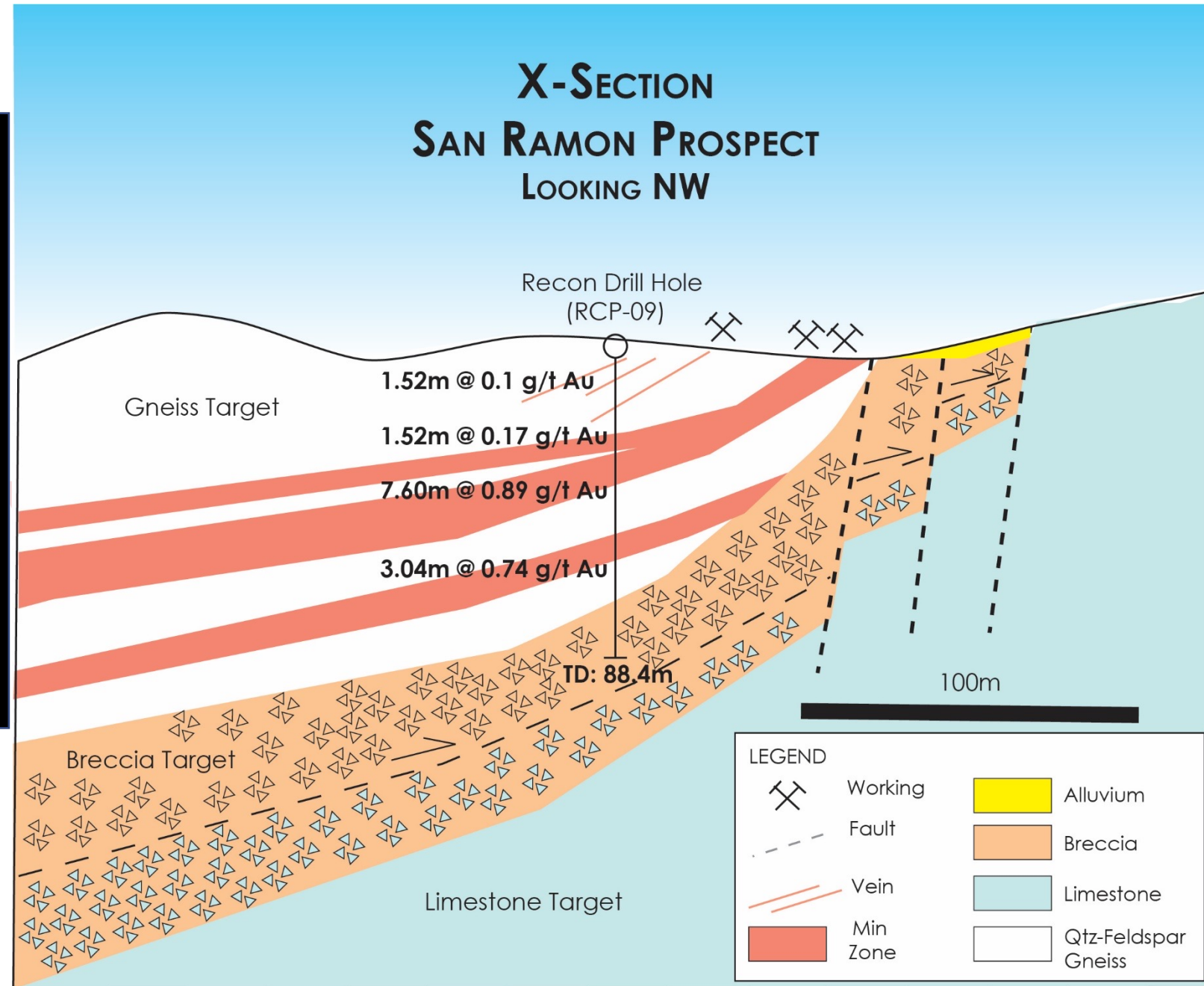
### Historic Recon Drilling at San Ramon

- **Derisked: 3 historic RC holes – All intersected mineralization, no follow-up**

### San Francisco Analog

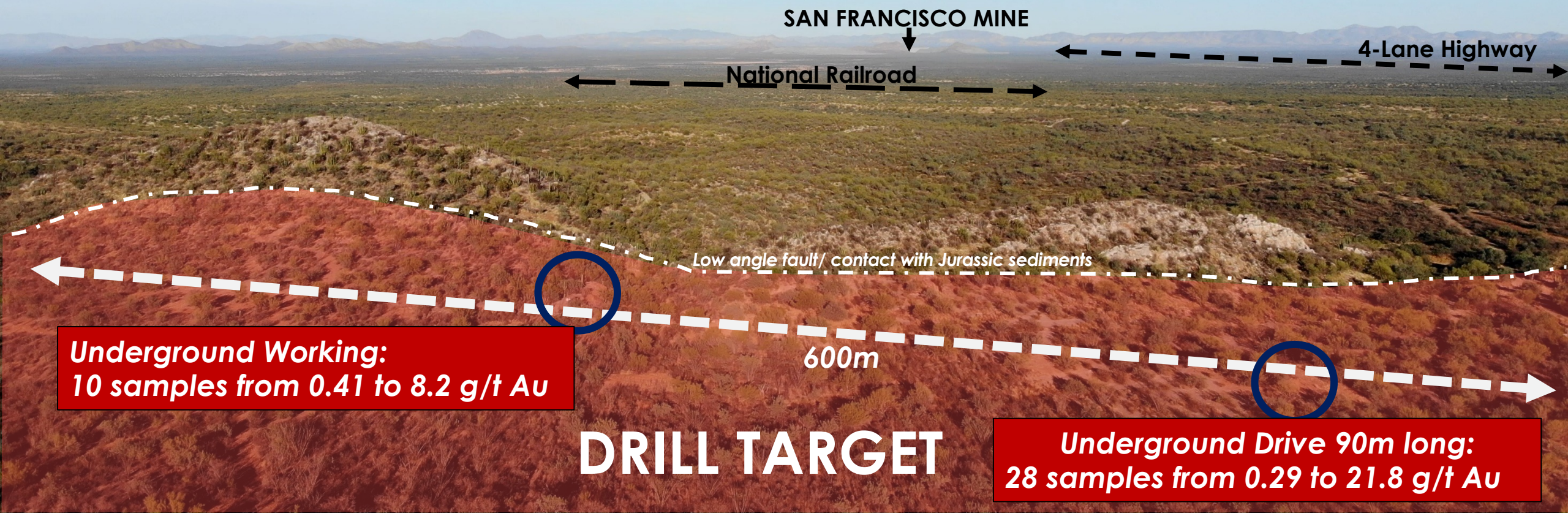
- 18 km from San Francisco Mine
  - 3 Moz Au
- Same gneiss host rock
- Same regional fault
- Underground Samples range:
  - 0.3 to 21.8 g/t Au

CSE: TOC | OTCQB: TCVNF | FSE: TV3





# PICACHO PROJECT - SAN RAMON PROSPECT





# NEXT STEPS

## PILAR

- ☐ Pending Assay Results
- ☐ Continued Drilling
  - ☐ SE Extensions
  - ☐ Infill
- ☐ Advance towards Maiden Resource Estimate
- ☐ Advance Metallurgy towards Bulk Test Mine

## PICACHO

- ☐ Continued Exploration (24km<sup>2</sup>)
- ☐ Maiden Drill Program Q4 2022  
(San Ramon Target)





## CONTACT US

CSE: **TOC** | OTCQB: **TCVNF** | FSE: **TV3**

### TOCVAN VENTURES CORP.

Brodie A. Sutherland, P.Geo.

Telephone: 1 888 772 2452

Email: [ir@tocvan.ca](mailto:ir@tocvan.ca)





# NOTES



CSE: TOC | OTCQB: TCVNF | FSE: TV3